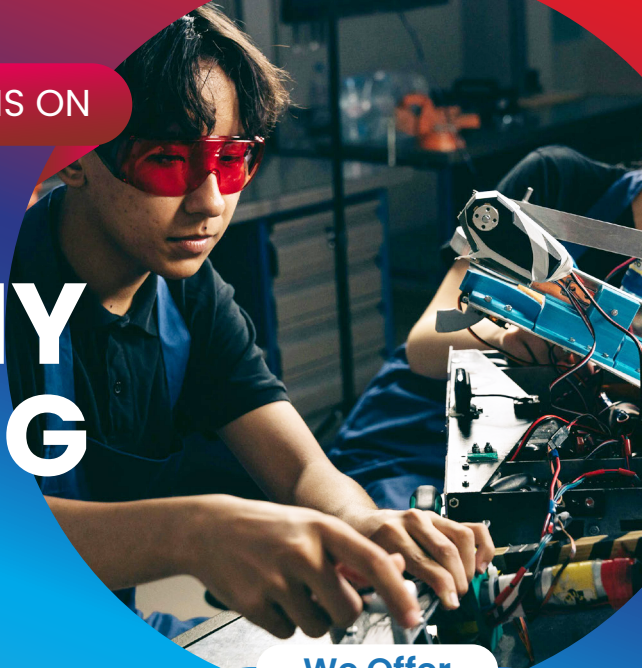


NEW INTAKE IS ON

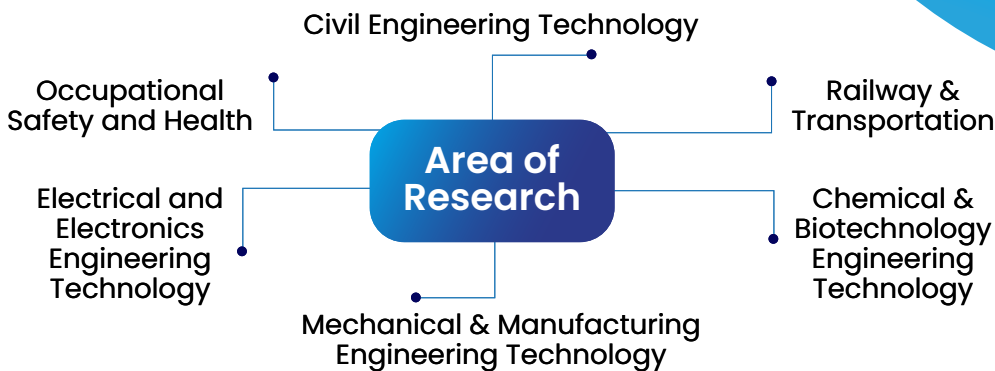
# DOCTOR OF PHILOSOPHY IN ENGINEERING TECHNOLOGY

**FACULTY OF ENGINEERING TECHNOLOGY**  
MQA / FA3734 March & October Intake



## We Offer

- ✓ Fast-Track Ph.D
- ✓ Thesis writing style by conventional / publication
- ✓ Full / part time study



## Entry Requirement

- i. A master's degree in the field or related fields accepted by UTHM Senate; OR
- ii. Other qualifications equivalent to a master's degree recognised by the Government of Malaysia.
- iii. Candidates without a related qualification in the field/s or working experience in the relevant fields must undergo appropriate prerequisite courses determined by UTHM. (Rigorous Assessment)
- iv. First class Bachelor graduates (CGPA 3.67/4.00) and above may apply for Fast Track PhD (Term & conditions apply)

## English Requirement

TOEFL = 500/ IELTS = 5.0 or MUET Band 3 for International students (Non-English speaking country)

Study Duration	Years of Study	
	Min	Max
Full Time	3	7
Part Time	4	9



## Fee Info

Scan the QR code for the programme fee.



**Global Technopreneur**  
University 2030



UTHM is Rated as a  
**Five-Star Institution**

Faculty of Engineering Technology,  
Universiti Tun Hussein Onn Malaysia,  
Campus (Pagoh Branch), Pagoh Higher Education Hub,  
KM 1, Jalan Panchor, 84600 Pagoh, Muar, Johor

+6017-5233915  
aimi@uthm.edu.my

ftk.uthm.edu.my  
wapps.uthm.edu.my/intake

**APPLY NOW**



jsisftkuthm